



14 Worley Avenue, Gateshead, NE9 6AL

Offers Over £120,000

Located on the desirable Worley Avenue in Gateshead, this spacious first-floor flat offers a wonderful opportunity for those seeking a comfortable and versatile living space. The property boasts a new roof, installed in approximately 2022, and has been thoughtfully re-pointed, ensuring both durability and aesthetic appeal. Upon entering, you are greeted by a welcoming entrance hallway, staircase that leads to the first floor landing, a well-proportioned lounge, which doubles as the main bedroom. This room features a charming fireplace and provides stunning views to the front, creating a warm and inviting atmosphere. The flat includes two additional bedrooms, perfect for guests or as a home office, alongside a generous lounge/dining room that also showcases a feature fireplace, adding character to the space. The kitchen is conveniently accessed from the lounge/dining area, making it ideal for entertaining or family gatherings. An internal hallway offers additional storage, enhancing the practicality of the layout. The bathroom is well-appointed, catering to all your needs. Outside, the property features a private yard to the rear, providing a peaceful retreat, as well as a separate garden to the front that presents an opportunity for those with a green thumb to create their own outdoor oasis. This flat is not only spacious but also brimming with potential, making it an ideal choice for first-time buyers, investors, or anyone looking to make their mark in a vibrant community. We highly recommend scheduling a viewing to fully appreciate all that this property has to offer.

ENTRANCE HALLWAY



FIRST FLOOR LANDING



BEDROOM ONE

14'4" x 13'2" (4.37m x 4.02m)



LOUNGE

14'2" x 12'9" (4.32m x 3.91m)



BEDROOM TWO

14'4" x 7'5" (4.38m x 2.28m)

BEDROOM THREE

8'2" x 7'4" (2.50m x 2.24m)



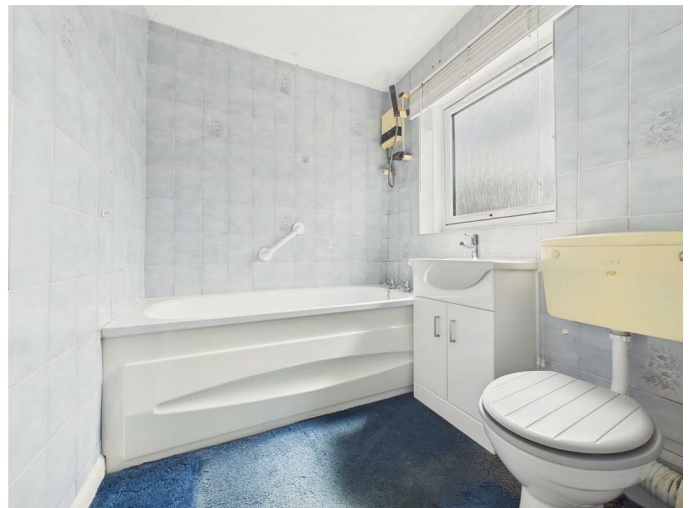
KITCHEN

9'6" x 7'1" (2.91m x 2.16m)

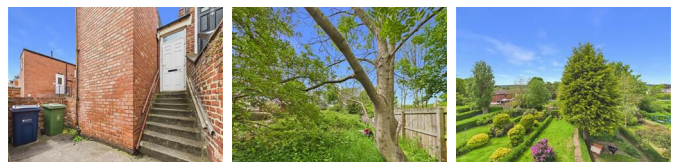


BATHROOM

6'9" x 5'10" (2.08m x 1.80m)



EXTERNAL

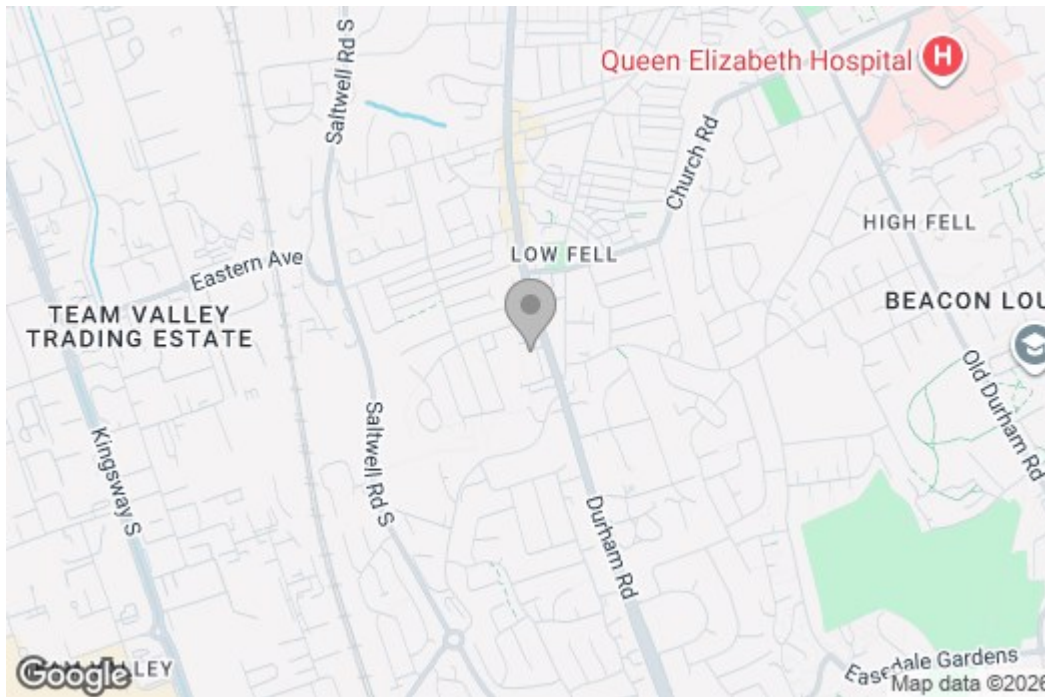


Property disclaimer

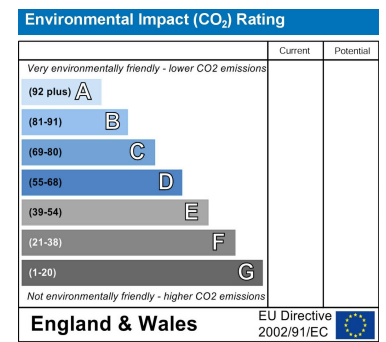
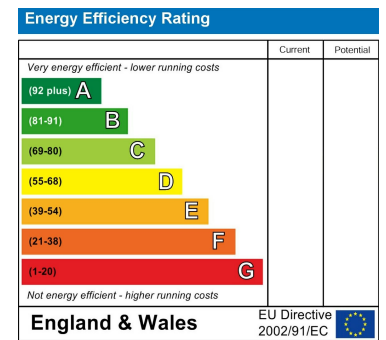
IMPORTANT NOTE TO PURCHASERS: We endeavour to make our sales particulars accurate and reliable, however, they do not constitute or form part of an offer or any contract and none is to be relied upon as statements of representation or fact. The services, systems and appliances listed in this specification have not been tested by us and no guarantee as to their operating ability or efficiency is given. All measurements have been taken as a guide to prospective buyers only, and are not precise. Floor plans where included are not to scale and accuracy is not guaranteed. If you require clarification or further information on any points, please contact us, especially if you are travelling some distance to view. Fixtures and fittings other than those mentioned are to be agreed with the seller. We cannot also confirm at this stage of marketing the tenure of this house.

Floor Plan

Area Map



Energy Efficiency Graph



These particulars, whilst believed to be accurate are set out as a general outline only for guidance and do not constitute any part of an offer or contract, purchaser should not rely on them as statements of representation of fact, but must satisfy themselves by inspection or otherwise as to their accuracy. No person in this firm's employment has the authority to make or give an representation or warranty in respect of the property.